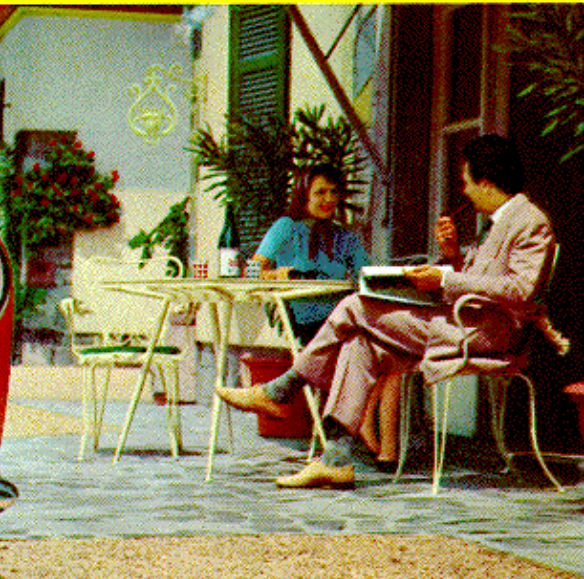


# **giulietta sprint veloce**



wiki.nl

**1300 cc coupé**  
**2 + 2 seats - 2 doors**



## The Giulietta Sprint

Veloce combines outstanding qualities with the impeccable style of the classic Alfa Romeo line and maintains the tradition of the sports car range.

The combined skill of Alfa Romeo technical staff has gone into the production of a small car which is extremely lively and easy to drive. Its extremely elegant, modern and streamlined appearance is combined with a high degree of comfort and spaciousness.

Other features include exceptional roadholding capacity,

high power at low speeds, good acceleration, high speed and a particularly effective braking system.

This model is faster than the Giulietta Sprint, from which it derives.

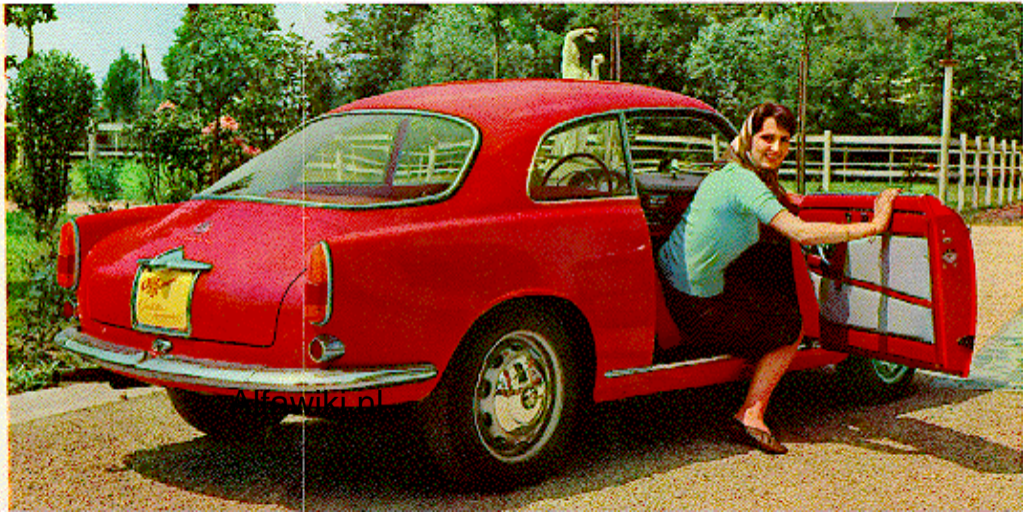
Therefore, due to its special performance — its speed reaches 133 m.p.h. —

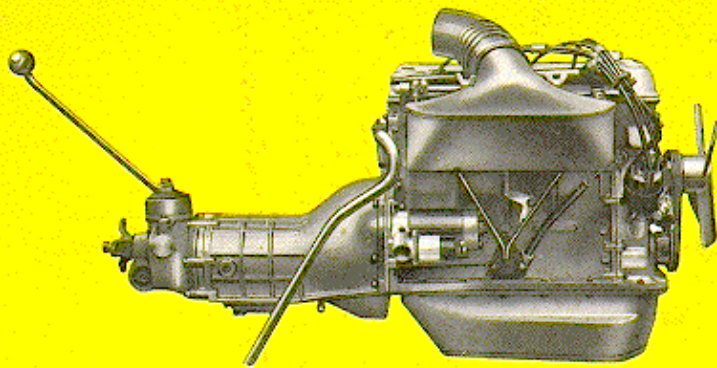
the car can be advantageously used for sporting purposes. As a matter of fact,

the Giulietta Sprint Veloce became famous all over the world for its victories in innumerable competitions, as, e.g.:

Mille Miglia, 1000 Kms. of Nürburging,  
12 Heures de Reims,

Tour Automobile de France, etc.





## engine

The Giulietta Sprint Veloce engine is fed by two horizontal twin-carburetor WEBER 40 DCO 3. Power at 6000 r.p.m.: 103 HP-SAE.

## technical features

Cylinders		4
Bore	mm	74
Stroke	mm	75
Cylinder capacity	cc	1290
Power at 6000 r.p.m.	HP-SAE	103
Wheel-base		7'10"
Front wheel track		4'3"
Rear wheel track		4'2"
Overall length		12'9"
Overall width		5'
Weight empty	lbs	190½
Maximum speed	m.p.h.	118
Fuel consumption (CUNA standards)	m.p.g.	21,3
Tyres		155 x 15 (155-380)
Electrical equipment	Volt	

**Valve operation:** two overhead cam-shafts driven by silent gear and chain

**Clutch:** single-plate dry clutch with shock-absorbing hub

**Gear-box:** 4 synchro-mesh forward speeds and reverse

**Transmission shaft:** in two pieces with intermediate bearing flexible joint at gear-box end and universal joint at each end of the rear shaft.

**Differential:** hypoid bevel drive, ratio 9 : 41.

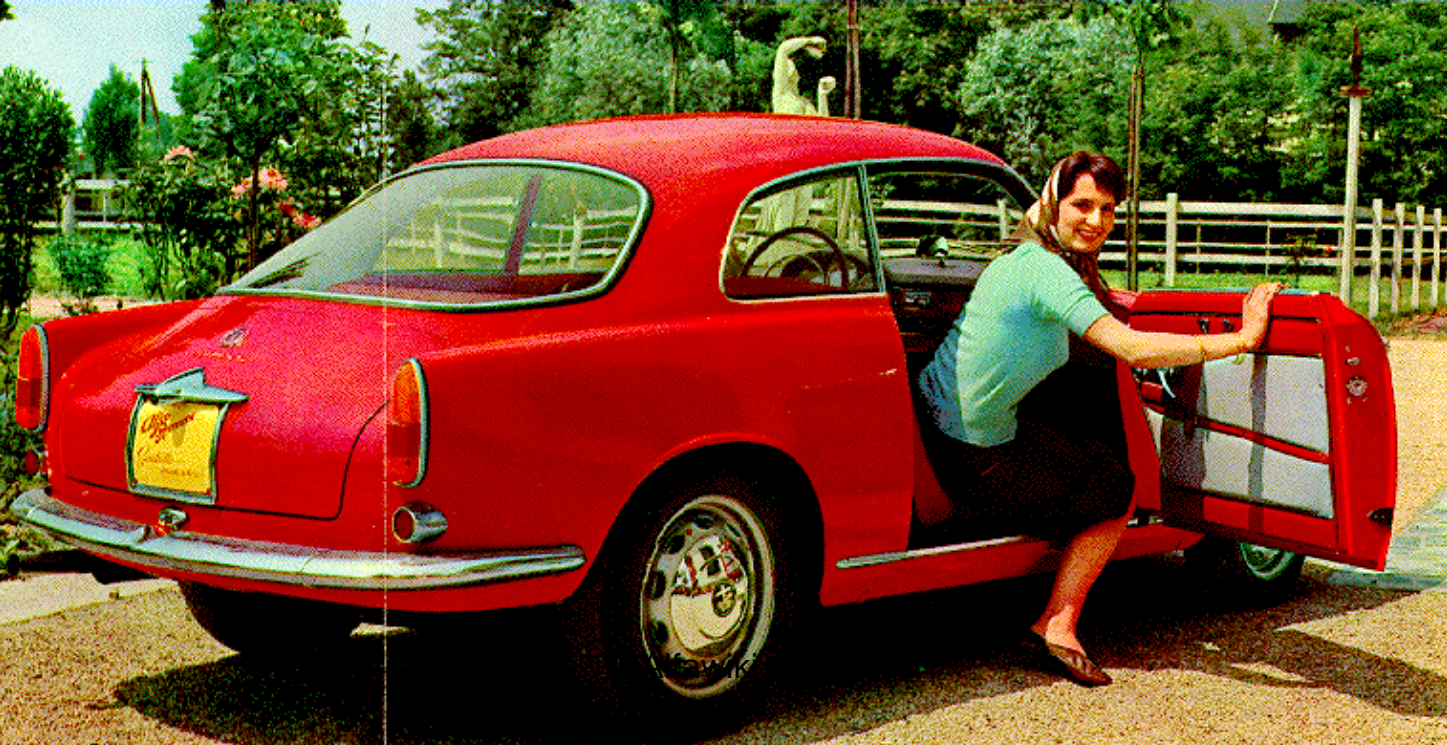
**Front suspension:** independent with transverse wishbones, coil springs and telescopic shock absorbers. Variable spring rate.

**Rear suspension:** rigid axle connected to the chassis by means of an upper triangular thrust rod and lower radius rods; coil springs and telescopic shock absorbers. Variable spring rate.

**Steering:** with worm and finger.

**Brakes:** hydraulic 4-wheel brakes are fitted. The front wheels have two leading sliding shoes; bimetallic drums of large dimensions; the front drums have herring-bone cooling fins.

The manufacturer has the right to change at any time the specifications without notification, and the figures are approximate and under the best conditions.





**T**he Giulietta Sprint Veloce combines outstanding qualities with the impeccable style of the classic Alfa Romeo line and maintains the tradition of the sports car range. The combined skill of Alfa Romeo technical staff has gone into the production of a small car which is extremely lively and easy to drive. Its extremely elegant, modern and streamlined appearance is combined with a high degree of comfort and spaciousness. Other features include exceptional roadholding capacity, high power at low speeds, good acceleration, high speed and a particularly effective braking system. This model is faster than the Giulietta sprint, from which it derives. Therefore, due to its special performances — its speed reaches 118 m.p.h. — the car can be advantageously used for sporting purposes. As a matter of fact, the Giulietta Sprint Veloce became famous all over the world for its victories in innumerable competitions, as, e.g.; Mille Miglia, 1000 Kms. of Nürburgring, 12 Heures de Reims, Tour Automobile de France, etc.

Alfawiki.nl